

Ricoh Latex Pro™ L5100 series

New Ricoh Large Format Latex series.
Made to drive your business forward



Pro™
L5130

41.4
m²/h Colour

Pro™
L5160

46.7
m²/h Colour



Pro™ L5130
Pro™ L5160
AR Ink

Prepare to take versatility and productivity to a new level

The new generation Ricoh Pro L5130/L5160 offer a unique combination of application versatility, usability and outstandingly high productivity to drive your business forward.

They deliver higher output speeds and even better image quality than ever before. Thanks to the three new high-speed staggered print heads and our new, almost instant drying, Latex ink plus improved jetting technology. It not only enhances productivity but gives you the ability to print on a vast range of media that solvent printers are unable to touch.

Other innovations include an auto cleaning system and truly friendly operator features to maximise uptime.

The Ricoh Pro L5130/L5160 handle wide-format print applications that can seriously expand your offering for indoor and outdoor use so that you can grow with this ever-growing market.



High-speed output and maximum uptime



Second generation of Ricoh Latex AR ink

Our own advanced quick-drying latex ink enable you to achieve outstanding productivity. Benefit from 4 Colour high output speeds of up to 46.7 m²/h, 25 m²/h for indoor.



Media Versatility

Ricoh's new industrial high-speed print heads, new latex inks and improved jetting technology not only offer superior image quality but the ability to print on permeable as well as impermeable media.



Usability and enhanced productivity

From intuitive touch panel and remote operation to auto adjustment sensor and auto cleaning system, Ricoh have introduced brand new technology for unbeatable ease of use that minimises downtime.



Wider applications

With a maximum media width of 1371mm and 1625mm, the Ricoh Pro L5130/L5160 can handle wide-format print applications from large-scale outdoor poster and building wraps to in-store signage and fine art prints to expand your customer offering.

New technology for performance, quality and profit



Auto adjustment sensor

The new Ricoh Reference Patch ensures stable print and colour quality and detects nozzle blocking. It compares target patches in the scanning area with the CMOS camera and automatically adjust and corrects. It ensures consistent colour and quality stability on print runs.

New Intuitive operation

- New 4.3 inch operation touch panel
- Tilts up to 90 degrees
- Ensures easier usage and helps improve productivity
- Keeps you in continuous control of production status



Device Monitoring and Control

- New internal LED Lamp allows you to monitor image quality and troubleshoot even while printing saving downtime
- New Attention Light alerts operators to any printing issues from afar
- Web Image Monitor enables you to check all printer status at once on a merged Home page for easier operation

Improve your output

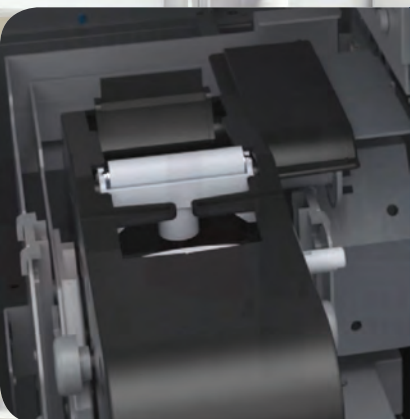
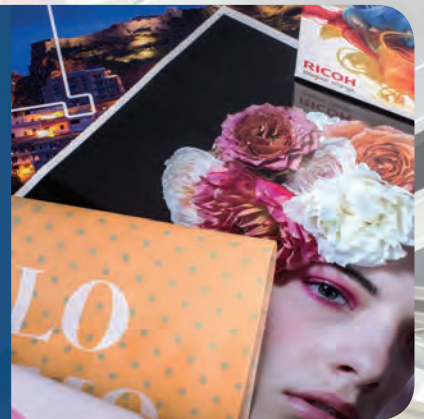


Leading image quality

- Ricoh's own market leading printing technology offers max resolution of 1200pi x 1200dpi
- High productivity is assured with 1280 nozzles/heads
- Achieves printing speeds of 46.7 m2/h outdoor materials, 25 m2/h for indoor

White ink and high black density

- Ability to print white to standard CMYK results in more vivid and vibrant colours and expands the range of applications
- 3-layer printing which prints white ink between colours shows images on both sides even though printing is on one side
- Increased density of the black ink results in sharper, richer details and the improved glossiness creates more vivid, eye-catching colours



Auto maintenance

- New auto cleaning system frees you from regular maintenance
- Keeps the long-lasting print nozzles clean, minimising downtime
- The web cartridge cleans every print head automatically while moving from the back to the front of the print heads

Reliable and efficient day after day

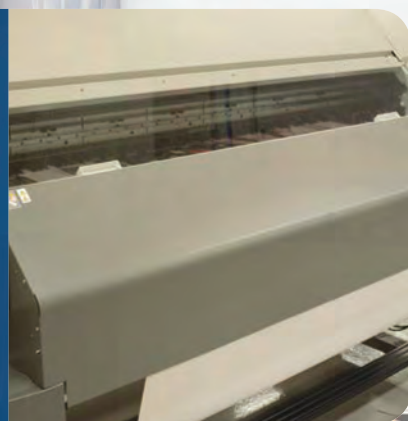


Enhanced head and jetting technology

- Three Ricoh Gen5 Industrial print heads "MH5421" and the latest Ricoh AR Latex ink technology ensure superb image quality and reliability
- Multi jetting provides three different drop sizes at once
- Multiple drop sizes with a minimum of 5pl for maximum performance on selected media

No drying time improves efficiency

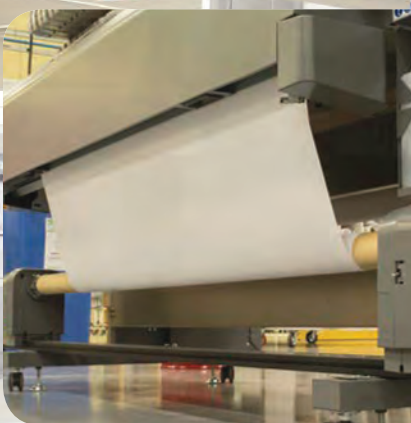
- New Ricoh latex inks mean immediate fixing and curing
- Infrared drying heater dries ink after printing so operators can immediately move on to secondary processes such as laminating
- No time is wasted on drying, speeding up workflow



Easy media setting

- Roll feed unit can be slid at 250mm to make it easier to load media to media support
- Enables you to see proper position of even heavier media
- Roll to Sheet Cutting* at each ripping data, means you can select to cut automatically and speedily move on to the next process

* Selective media only are uncuttable with this function.



End-to-end sustainability



Low print temperature

- Low energy consumption - Energy Star 4 colour model
- 60 degree C cold cure capability for various heat sensitive media
- Suitable not only for film media but also coated paper, PET, tarpaulin, PVC, polyester cloth, cotton, wallpaper and transparent vinyl

Eco-friendly

- Low smell and VOCs - no need for special ventilation which makes installation and operation of the new Ricoh Pro L5130/L5160 even easier and safer
- Less ink consumption - automatic ink refill system (4-colour mode) for long continuous print runs
- Eight reusable ink cartridges can be inserted



Greenguard Gold certification

The latex ink for the Ricoh Pro L5130/L5160 has been awarded the Greenguard Gold Certification. It means that a product has passed the strictest standards for low chemical emissions, improving the air quality in the environments in which the products are used.

Outstanding versatility inside and out



Indoor advertising/retail, POS and POP

Advertising posters, POP/POS, pop-up/roll-up displays and window graphics.
Coated/uncoated paper, film, self adhesive vinyl and textiles.

Outdoor applications

Banners, billboards, building wraps, flags, outdoor banners and vehicle graphics.
Film, tarpaulin, synthetic paper OPP, PET films, self adhesive vinyl and textiles.



Exhibition and event graphics

Floor graphics, light boxes, hanging banners and display graphics.
Paper, synthetic film, self-adhesive vinyl and textiles.

Vehicle graphics

Wraps, side panels, window stickers, logos
Self-adhesive vinyls and films.



Results that demand attention



Signage

Double-sided signs, information signs, light boxes, personalised signs, soft signage, directional signs and window stickers.
Coated/uncoated paper, fabric, film and self-adhesive vinyl.

Photos and fine art prints

Designer prints, fine art prints and photo enlargements.
Coated/uncoated papers, film, self-adhesive vinyl and textiles.



Decoration

Wall coverings and interior decoration.
Textiles, paper film, wallpaper and self-adhesive vinyl.

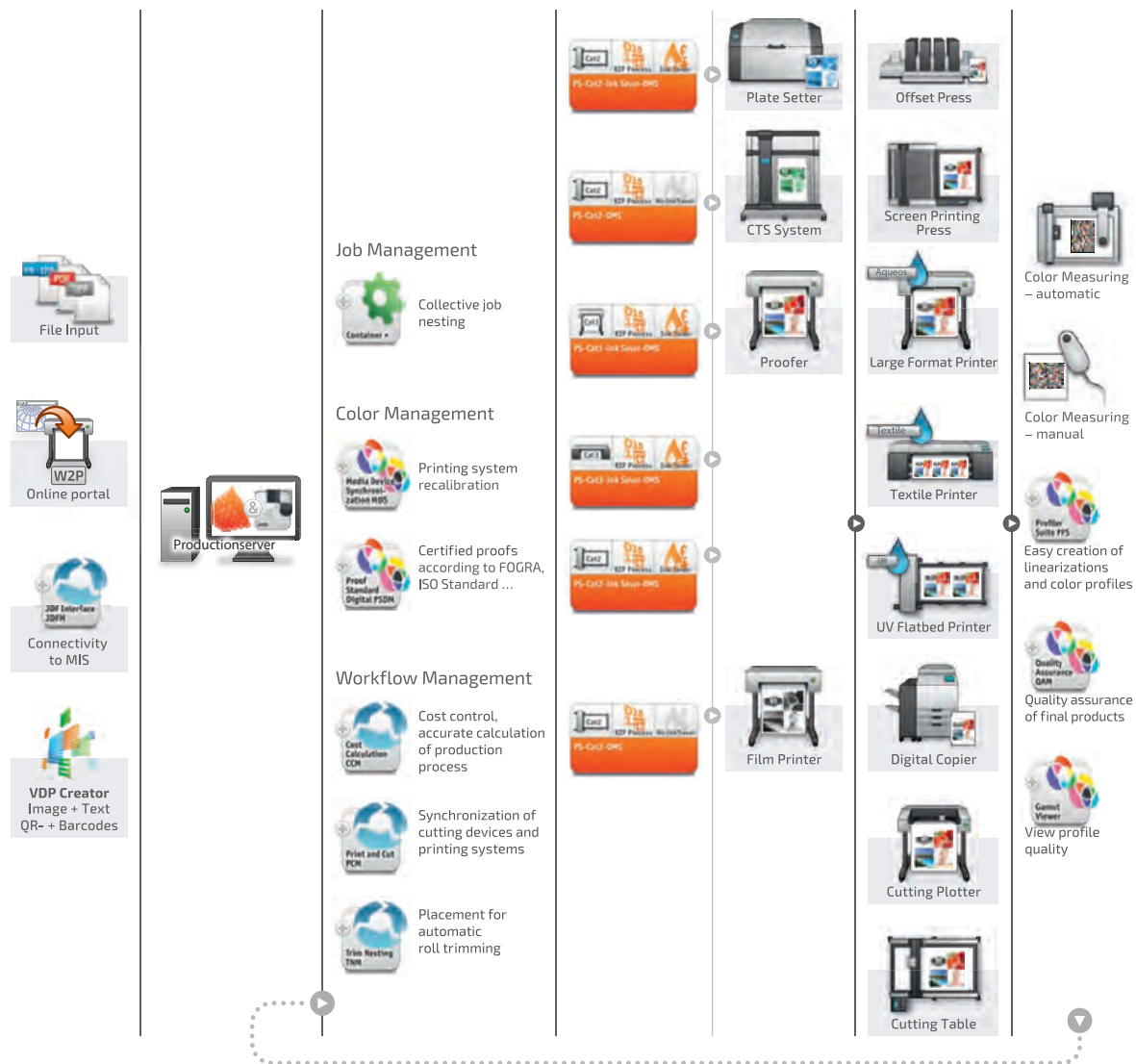


Labels and flexible packaging

Food, wine, beverage, pharmaceuticals, cosmetics and household goods.
Paper, synthetic paper, OPP and PET film.




Workflow and Color Management Solutions



Solutions designed for demanding environments:

ColorGATE Productionserver offers a proven workflow and color management solution that allows you to meet the creative demands of your clients quickly and accurately whilst achieving high quality colour output across a range of media for a broad range of large format applications.

The Productionserver utilises the latest  Print Engine (APPE) technology at its core allowing you to handle the very latest PDF standards, features and formats without compromise.

Modular and scalable as your business grows:

ColorGATE RIP - and Printing Software is designed around a scalable and modular architecture allowing you to expand the solution and add additional modules to meet your own production requirements as your business adapts and grows. Additional drivers and APPE RIP's can be added allowing multiple devices to be driven from a single ColorGATE central server allowing you to manage a mixed device environment from a single solution.

Customisable to your own requirements:

Available options include cost calculation, ink saving, ICC profiling tools (for custom media characterisation) and a print and cut module to connect supported cutting tables and plotters.

For a complete list of available upgrades and options speak to your local Ricoh representative.

All the options you need to succeed



1 Inks cartridge configuration (600ml or 1200 ml)

2 Attention light

3 Internal LED lamp to monitor image quality

4 Auto cleaning system

5 New 4.3 inch operation Touch Panel

6 "IR" Infrared drying-heater system

7 Waste ink bottle

8 Roll holder, take-up and media tensioner devices.

9 1 roll unit

10 Media cutter

Ricoh Pro L5130/L5160

MAIN SPECIFICATIONS

GENERAL

Ink Type:	V.2 AR (Aqua Resin) Ricoh Durable Latex ink
Head Type:	Ricoh GEN5 high-speed piezo durable print heads (MH5421)
Print Speed:	Pro L5160: 4-colour mode. 6 pass: Super Draft 46.7 m ² /h 8 pass: Draft 32.5 m ² /h 12 pass: High Speed 25.0 m ² /h 16 pass: Standard 15.4 m ² /h 32 pass: High Quality 8.7 m ² /h Pro L5160: 4-colour mode + white. 6 pass: Super Draft 24.9 m ² /h 8 pass: Draft 18.9 m ² /h 12 pass: High Speed 12.9 m ² /h 16 pass: Standard 8.7 m ² /h 32 pass: High Quality 4.1 m ² /h Pro L5130: 4-colour mode. 6 pass: Super Draft 41.4 m ² /h 8 pass: Draft 28.9 m ² /h 12 pass: High Speed 22.3 m ² /h 16 pass: Standard 13.8 m ² /h 32 pass: High Quality 7.8 m ² /h Pro L5130: 4-colour mode + white. 6 pass: Super Draft 22.2 m ² /h 8 pass: Draft 16.9 m ² /h 12 pass: High Speed 11.6 m ² /h 16 pass: Standard 7.8 m ² /h 32 pass: High Quality 3.7 m ² /h
Resolution:	450dpi, 600dpi, 900dpi, 1200dpi
Dimensions (W × D × H)	Pro L5130: 3050mm x 1000mm x 1500mm Pro L5160: 3300mm x 1000mm x 1500mm
Weight:	Pro L5130: less than 360kg Pro L5160: less than 380kg
Power Source:	AC220-240V 16A 50/60Hz x 2lines
Power Consumption:	Less than 6000W Sleep : Less than 5.35W Off : Less than 0.5W
Interface:	Ethernet (100BASE-TX/1000BASE-T)
Operation Panel:	4.3inch uWVGA (Color touch panel+ Hard keys) Display Languages : Japanese, English, German, French, Italian, Spanish, Dutch, (European) Portuguese, Russian, Korean

INK SET

Ink Set Combinations:	4-colour mode (CMYK) 5-colour mode (CMYK+W)
Droplet Size:	5pl
Ink Capacity:	4-colours: CMYK 600ml or 1200ml (2 cartridges for each colour) 4-colours: CMYK 600ml or 1200ml (1 cartridges for each colour 4 cartridges for White)
Ink Capacity Types:	600ml Regular Cartridge 1200ml High Volume Cartridge

MEDIA

Media Options:	Wide ranging media compatibility which includes thin coated paper, Synthetic Paper, PET, tarpaulin, weatherproof PVC, window film, polyester, canvas and cotton.
Curing Time:	Fast curing for secondary processing such as lamination thanks to "IR" Infrared drying-heater system on board.
Curing Method:	3Way (Pre-Print-Post) Heater + IR Heater
Maximum Paper Width:	Pro L5130: 1361mm Pro L5160: 1615mm
Maximum Media Width:	Pro L5130: 1371mm Pro L5160: 1625mm Minimum 297mm
Media Weight:	55kg or less
Media Feed Length:	Maximum 300m or less
Roll Outside Diameter:	Maximum 250mm or less
Roll Inside Diameter	3 or 2 inches
Head Height Adjust:	1.8mm(default), 2.3mm, 2.8mm, 3.8mm
Margin Setting:	Default: 15mm at each sides Min: 5mm at each sides

PC SPECIFICATIONS - SYSTEM REQUIREMENTS

Operating systems 64 bit recommended	Microsoft Windows 7 (Professional, Enterprise, Ultimate) Microsoft Windows 8 (Pro, Enterprise) Microsoft Windows 10 (Pro, Enterprise) Microsoft Windows Server 2008 R2 Microsoft Windows Server 2012 Microsoft Windows Server 2016 (Apple Mac OS X 10.5.2 or later with Parallels Desktop 4.0 or later for Mac)
Minimum hardware requirements:	CPU: Dual Core2GHz or later RAM: ≥4 GB Free disk space: 10 GB HDD more than 500GB Display resolution: 1280 x 1024
Recommended for using one printer:	CPU: Intel i5 / AMD Dual-Core 2 GHz+ RAM: ≥8 GB Free disk space: 40 GB Display resolution: 1280 x 1024
Recommended for using multiple printers:	CPU: Intel i7 / AMD Ryzen 5/7 3 GHz+ RAM: ≥16 GB Free disk space: 80 GB SSD Display resolution: 1280 x 1024
Installation and operation:	USB port 1, DVD drive is required, LAN adapter, TCP/IP for network access required
Interfaces:	Parallel, Ethernet, TCP/IP, USB, Serial, FireWire, TWAIN

RIP - AND PRINTING SOFTWARE

ColorGATE Productionserver (PS) (Professional and advanced colour management - in bundle with mainframe)	
Features:	High-quality modular components Optimal color rendering Consistency of reproduction at any time Maximum productivity Intuitive control concept and user interface Utilizes the latest Adobe PDF print engine

ENVIRONMENTAL INFORMATION

Environmental:	New V.2 aqueous durable (latex) inks have very low emissions of VOCs (volatile organic compounds) and lack of odour requiring no ventilation.
----------------	---

