

Direct to Garment Printer

RICOH Ri 100

Printer Copier Facsimile Scanner

RICOH
imagine. change.



* RICOH Ri 100 printer with the RICOH Rh 100 finisher option.
* The output samples shown above are for illustration purposes.

1200
dpi Full-Colour

A direct to garment (DTG) printer for anyone, anywhere!

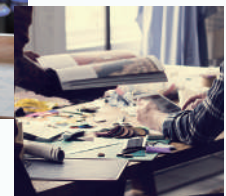
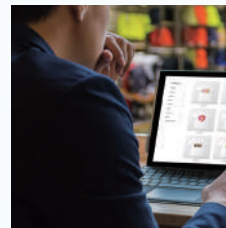
The RICOH Ri 100 invigorates the world of direct to garment (DTG) printing with its space saving design. The RICOH Ri 100 prints images directly onto fabrics using state-of-the-art DTG technology. You can print a one-of-a-kind T-shirt or personalized bags for customers. No prior experience necessary to create beautifully printed products both safely and easily. It has never been easier to widen your business scope with one machine.

Applications for customers looking for...

An entry model for garment printing

- Start your custom T-shirt printing service in a snap
- Low-cost initial investment in equipment
- Easy-to-use printing process

With a low price and an easy-to-use design, the RICOH Ri 100 makes it easy to begin DTG printing. Since all printing is on-demand, you only need to keep a minimum stock of materials on-hand.



The convenience of in-store equipment

- Produce impressive textile printed products on the spot
- Offer in-house printing services
- Easily print personalized textile printed goods for your shop (cafes, bookstores, etc.)

Bring in fresh customers by utilizing DTG printing as an innovative shop service.

Extra added value from print services

- Boost customer numbers
- Print from a wide range of sources (school art projects, drawings, photographs, etc.)
- Create travel mementos by printing photographs on garments and other textile products

Anyone can print with ease, leading to unlimited possibilities. RICOH Ri 100 will help boost customer satisfaction.



* RICOH Ri 100 printer with the RICOH Rh 100 finisher option.

5 Featured Advantages of the RICOH Ri 100



Compact, efficient size

The RICOH Ri 100 can fit into a space as small as 399 x 698 mm, making it one of the smallest DTG printers. The printer and its finisher can be stacked to maximize functionality without sacrificing space.



* RICOH Ri 100 printer with the RICOH Rh 100 finisher option.



High quality images & products

Achieve high quality prints thanks to Ricoh's inkjet technology. Preserve the look on feel of natural fabrics and colourfast prints with direct to garments print using textile inks.



Easy-to-operate design software

Ricoh Design Software lets you import and edit images before printing, with no specialized knowledge or skills required. Even smartphone photos can be printed with ease.



Unbelievable low price

As a DTG printer, the RICOH Ri 100 is priced extremely reasonably. Those savings continue through the running costs. RICOH Ri 100 does not require time consuming set up, therefore, it is perfect for small lot printing.



Excellent operability, safety, and easy maintenance

RICOH Ri 100 is very easy to operate and is designed with safety as a top priority. The intuitive design requires no prior experience to preheat, print, and use the finisher option to fix the design safely. Periodic maintenance is carried out through a simple process (automatic and semiautomatic).

STEP 1



Choose the design

Use the accompanying software to choose the design. Set the printing mode based on the fabric used.

STEP 2



Set fabric

Set the T-shirt or bag in the tray. Even beginners can accomplish this task with ease.

STEP 3



Pre-press

Insert the tray into the finisher to smooth out creases.

STEP 4



Print

Printing takes approximately two minutes. Just load and unload the tray – it is that easy.

STEP 5



Fix the design

Use the finisher (with built-in safety features) to fix the ink and lock in the design.

RICOH Ri 100

MAIN SPECIFICATIONS

RICOH Ri 100 Printer

General

Printing Method	Direct to garment printer	
Technology	On demand piezo inkjet system	
Resolution (dpi, bit/pixel)	1200 x 1200 dpi, 600 x 600 dpi	
Print Speeds	Speed Mode	Less than 1 min 20 sec
	Fine Mode	Less than 2 min 30 sec (Default)
	Vivid Mode	Not stipulated
Dimensions (WxDxH)	399 x 698 x 292.5 mm : (Installation)	
	399 x 760.3 x 292.5 mm : (Operation)	
Weight	Less than 25 kg	
Printable Area	A4 Tray	291 x 204 mm
	A5 Tray	204 x 142 mm
Printable Garment Type	Fabric	50-100% Cotton
	Media	T-shirt(From baby size to adult), Tote bag, Sweatshirt, Polo shirts
Fabric Thickness	A4 Tray	Less than 4 mm
	A5 Tray	Less than 4 mm
Rating Power Spec.	US/Japan version	100 - 120V, 50/60Hz
	EU/Asia/China version	220 - 240V, 50/60Hz
Power Consumption	Active	Less than 27.5 W
	Energy Saver Mode	Less than 2 W
Operating Conditions	15°C (59°F) - 32°C (89.6°F), Humidity 15% - 80% RH	
Warm-up Time	Less than 35 sec	

Supported Environment	Windows Vista	Home Basic, Home Premium, Business, Enterprise, Ultimate
	Windows Server 2008/2008 R2	Standard, Enterprise, R2 Standard / Enterprise, Home Premium
	Windows 7	Home Premium, Professional, Enterprise, Ultimate
	Windows 8.1	Standard, Pro, Enterprise,
	Windows Server 2012/2012 R2	Foundation, Essentials, Standard
	Windows 10	Home, Pro, Enterprise, Education
	Windows Server 2016	Essentials, Standard, Datacenter, MultiPoint Premium Server
	Mac OS X(Intel) 10.9 or later	
Connectivity	Host Interface	USB2.0 High Speed, 10BASE-T/100BASE-TX, IEEE 802.11 b/g/n
	Network Protocol	TCP/IP
	Network/Operating Systems	Windows Vista/7/8.1/10/2008 Server/2012 Server/2016 Server Mac OS X 10.9 or later

Environment

Safety Standard	UL / CE / IEC
EMC	FCC / CE / C-Tick/RCM
RF	FCC / RSS-210 / RE / C-Tick/RCM



The RICOH Rh 100 can be set underneath the RICOH Ri 100 and function as a finisher.

Consumables

Ink Type	Pigment Ink
Target Consumable Yield (with Ricoh standard files for yield, Monthly PV = 200 prints, including the ink amount for head cleaning)	

Target Consumable Yield

High Yield	RICOH Garment Ink Cartridge K (Hi Yield) Type 1	140ml/cartridge, Average 600 prints
	RICOH Garment Ink Cartridge C (Hi Yield) Type 1	
	RICOH Garment Ink Cartridge M (Hi Yield) Type 1	100ml/cartridge, Average 500 prints
	RICOH Garment Ink Cartridge Y (Hi Yield) Type 1	
Regular Yield	RICOH Garment Ink Cartridge K Type 1	50ml/cartridge, Average 200 prints
	RICOH Garment Ink Cartridge C Type 1	
	RICOH Garment Ink Cartridge M Type 1	35ml/cartridge, Average 150 prints
	RICOH Garment Ink Cartridge Y Type 1	

Option

RICOH Rh 100 Finisher	Fix Mode (Fusing)	Un-contact heating
	Press Mode (Pre-heating)	Contact heating
	Machine Size	400 x 600 x 220 mm
Weight		Less than 16.5 kg
	NA	110 - 127V, 50/60Hz
	EU/AA/CHN/IND	220 - 240V, 50/60Hz
	Energy Consumption	Less than 1300 W
	Temperature Range	175°C(Default)/165°C

RICOH Tray for Standard Size Type 1 (A4)

RICOH Tray for Small Size Type 1 (A5)



RICOH Rh 100 Finisher



RICOH Tray for Standard Size Type 1 (A4)



RICOH Tray for Small Size Type 1 (A5)

RICOH
imagine. change.

RICOH (SINGAPORE) PTE LTD
20W Pasir Panjang Road #04-28 Mapletree Business City Singapore 117439
Phone: +65 6474 0777 Fax: +65 6476 0777
Email: sales@ricoh.sg Website: www.ricoh.sg

All brand and/or product names are trademarks of their respective owners. Specifications and external appearance are subject to change without notice. The colour of the actual product may vary from the colour shown in the brochure. The images in this brochure are not real photographs and slight differences in detail might appear. Copyright © 2017 Ricoh Singapore Pte Ltd. All rights reserved. This brochure, its contents and/or layout may not be modified and/or adapted, copied in part or in whole and/or incorporated into other works without the prior written permission of Ricoh Singapore Pte Ltd.