

**RICOH**  
imagine. change.



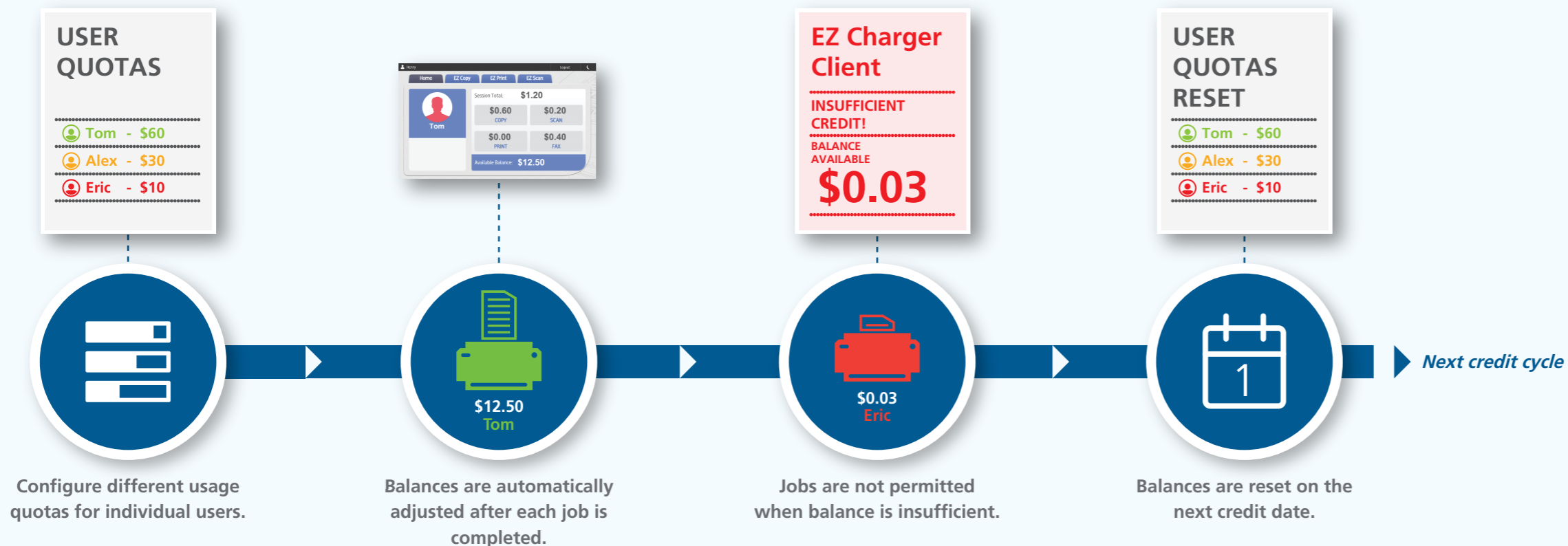
# RICOH EZ Charger Suite

**Your accounting solution to efficient print budgeting.**

- ✓ Reduce wastage
- ✓ Cost control
- ✓ Eliminates disputes
- ✓ Accurate reports
- ✓ Unobtrusive training

# What is EZ Charger Suite?

Ricoh helps you rein in cost of printing with its effective print budgeting system.



## 1 Scalable solution to match your needs



## 2 Easy to Manage



## 3 Intuitive and easy to use



## 4 Security

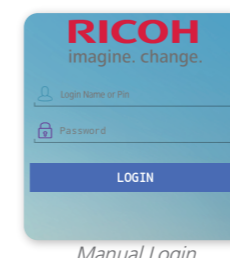
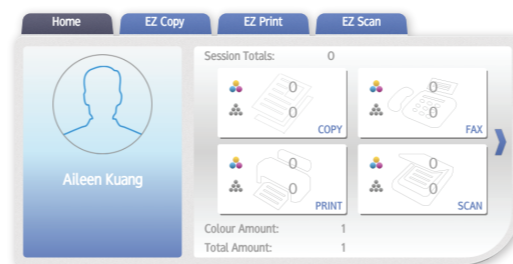
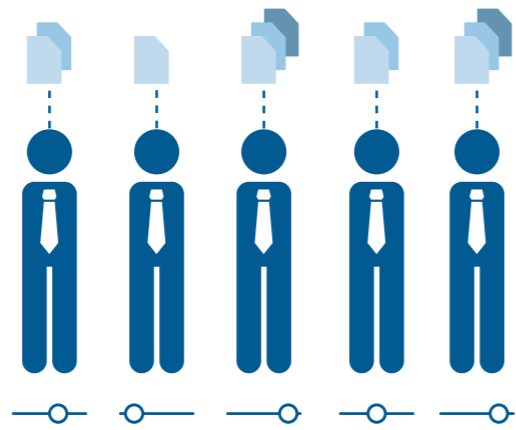
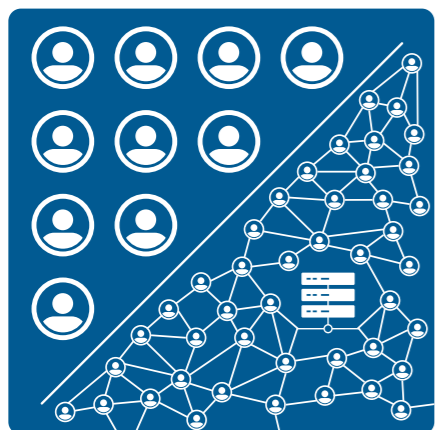


Manage multiple MFPs at the same time, regardless of whether there is a server infrastructure in the office, thus lightening the workload of IT support staffs.

Manage operational cost by simply specifying a quota for each MFP or user, and also, generate detailed reports for chargeback purposes, all these through web browser based administration.

Clear display of printing options and budget summaries. A quick touch to initiate print, copy or scan. Send print/scan to mobile devices too.

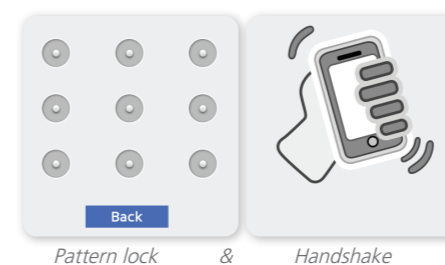
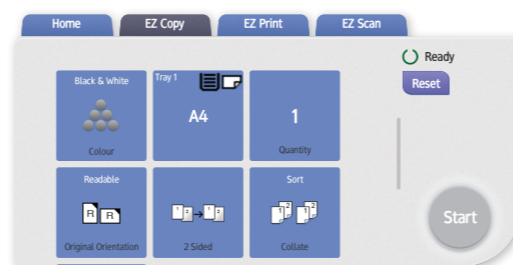
Increase the security of print environment through a simple, fast and secure 'swipe-and-go' card authentication, mobile authentication (handshake), pattern lock, or manual.



Manual Login



'Swipe and go' via card authentication



Pattern lock & Handshake Mobile authentication

# Benefits



## Reduce wastage

Ability to control user usage (through quota settings) ensures there is accountability. Users have the ability to select or delete print jobs on the device itself.



## Cost control

Gives administrators options, such as creating a running tab for monitoring or charge-back purposes, or for implementing a quota system to limit MFP resources.



## Eliminates disputes

Disputes over document reproduction expenses can be resolved with detailed cost tracking, preventing any miscommunication.



## Accurate reports

Replaces the need for manually tracking document production costs, and reflect the true cost of printing.



## Unobtrusive training

Minimal training required allows for workflow to be unaffected even after system is in place.

# RICOH EZ Charger Suite

## MAIN SPECIFICATIONS

### PC SERVER

---

CPU	(Minimum) 3.0GHz dual core 64bit (Recommended) Intel Xeon quad core or more core CPU
Memory	(Minimum) 8GB (Recommended) 32GB or more
Free Space	(Minimum) 50GB (Recommended) 1TB or more
OS	Windows Server 2016 64bit Windows 10 Pro or Enterprise Edition 64bit Window Server 2012 64bit Windows Server 2012 R2 64bit Windows Server 2008 64bit Windows Server 2008 R2 64bit
JRE	V1.8 and above (Packaged with Release software)
Web Server	Tomcat v8.x

### PC CLIENT

---

Browser	IE 11; Chrome55 or later; Edge38 or later
---------	---

### MAC CLIENT

---

Mac OS	V10.7.3 and above
JRE	V8.0 and above

For more information, please contact your local sales representative.

**RICOH**  
imagine. change.

#### RICOH (SINGAPORE) PTE LTD

20W Pasir Panjang Road #04-28 Mapletree Business City Singapore 117439

Phone: +65 6474 0777 Fax: +65 6476 0777  
Email: sales@ricoh.sg Website: www.ricoh.sg

All brand and/or product names are trademarks of their respective owners. Specifications and external appearance are subject to change without notice. The colour of the actual product may vary from the colour shown in the brochure. The images in this brochure are not real photographs and slight differences in detail might appear. Copyright © 2018 Ricoh Singapore Pte Ltd. All rights reserved. This brochure, its contents and/or layout may not be modified and/or adapted, copied in part or in whole and/or incorporated into other works without the prior written permission of Ricoh Singapore Pte Ltd.