

Assessment & Cost Recovery Solution

# RICOH Device Manager NX Accounting

**RICOH**  
imagine. change.



## A Smarter Way to Track Efficiency

The customizable RICOH Device Manager NX Accounting software solution helps put you on the fast track toward cost savings. This easy-to-use utility offers comprehensive administrative tools to perform essential billing and reporting tasks—including accurate charge backs—from the convenience of your desktop. It can be installed quickly on a standard PC and works with both networked Ricoh and third-party devices. Additionally, it leverages advanced capabilities found only in the latest generation devices based on Ricoh's services-led platform. Use it to allocate resources more effectively and to manage your document output fleet more economically.

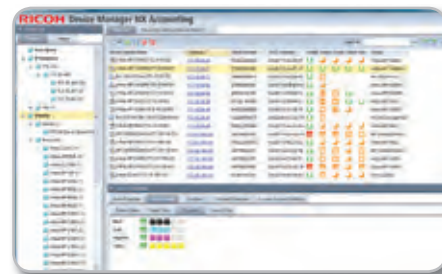
### Measure costs accurately

Use Ricoh Device Manager NX Accounting to create multiple customized administrative and end-user reports to capture print, copy, scan and fax usage for Ricoh devices across the network. Automate tracking and billing with the Scheduler feature—right down to individual users or departments—to improve cost savings by identifying wasteful printing.

Department	User Code	User Name	Color Pages	Color Cost
Marketing	User 010	User 010	577	26.59
	User 011	User 011	476	18.42
	User 012	User 012	86	3.60
	User 013	User 013	611	120.64
	User 014	User 014	114	208.51
Accounting	User 015	User 015	1817	145.20
	User 021	User 021	39	0.12
	User 022	User 022	182	10.24
	User 023	User 023	54	4.34
	User 024	User 024	45	8.80
Sales	User 017	User 017	134	18.71
	User 018	User 018	54	4.12
	User 021	User 021	11	-0.88
	User 022	User 022	976	60.38
	User 023	User 023	66	5.28
	User 024	User 024	74	5.81
	User 024	User 024	121	28.49

### Monitor your networked devices proactively

Early detection can prevent a lot of problems. Administrators can use Ricoh Device Manager NX Accounting to proactively monitor a wide range of device properties such as consumable levels, paper supplies and service conditions in order to quickly troubleshoot issues and minimize downtime. Take advantage of easy-to-use, drag-and-drop display columns to personalize device monitoring and management tasks to fit your unique requirements.



### Manage devices centrally

Take advantage of centralized controls and an intuitive, user-friendly interface to simplify device management on services-led platform Ricoh devices. Manage individual device features such as paper types, transition to energy saving mode and even network settings right from your desktop. Clone settings and features on one device and assign them to another device—or group of devices—for fast, convenient configurations and installations. Set and control user privileges to restrict access to specific functions and curb excessive or unauthorized usage.

### Automate fleet management

Optimize fleet efficiency. Check status and activity for up to 250 Ricoh and non-Ricoh devices in your network fleet right from the desktop. Set and implement standardized policies across the entire fleet to streamline administrative tasks and create a consistent, reliable device management strategy. You can even categorize groups of devices using manual, dynamic or automatic grouping to quickly help you find exactly what you need.

**RICOH**  
imagine. change.

#### RICOH (SINGAPORE) PTE LTD

20W Pasir Panjang Road #04-28 Mapletree Business City Singapore 117439

Phone: +65 6474 0777

Fax: +65 6476 0777

Email: sales@ricoh.sg

Website: www.ricoh.sg

## Specifications

### System Requirements

Minimum:	CPU: Intel® Core™ 2 Duo Processor 1.6 GHz or higher RAM: 1.0 GB HDD: 1.2 GB free space
Client Operating System:	Windows® XP Home/Professional SP3 and later (32bit) Windows® Vista Home Premium/Business/Enterprise/Ultimate SP2 and later (32bit) Windows® 7 Home Premium/Professional/Enterprise/Ultimate SP1 and later (32bit/64bit) Windows® 8/Pro/Enterprise (32bit/64bit)
Database:	Apache Derby DB included
Protocols:	SNMP v1/v2/v3 HTTP HTTPS (client only) DNS FTP/SFTP LDAP (Type R only)
Security:	Hash: SHA-256 and higher Symmetrical algorithm: RSA2048 and higher Asymmetrical algorithm: AES256 and higher
Virtualization:	Not supported
Supported Devices:	General Support: • Networked Ricoh MFP and Laser Printers introduced in 2005 and later • Networked Ricoh GELJET, GDI and SMART controller devices • Networked standard MIB devices Enhanced Support: Services-led platform networked Ricoh devices introduced in 2012 and later User Accounting Support: Ricoh Family Group MFP and Laser Printers introduced in 2005 and later which support User Authentication